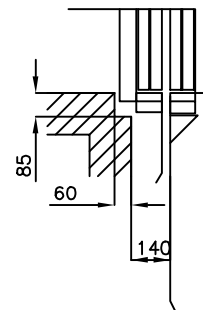
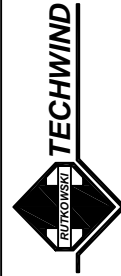
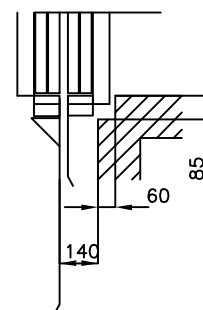


KAT OPASANIA
Skala 1/20

CZESC Y
Drzwi na 0,1



CZESC YY
Drzwi na 2



RYSLUNEK NR

SKALA

WARSZAWA 27/07/2008

SPRAWDZONE

www: <http://www.techwind.eu>
e-mail: techwind@gdansk.home.pl

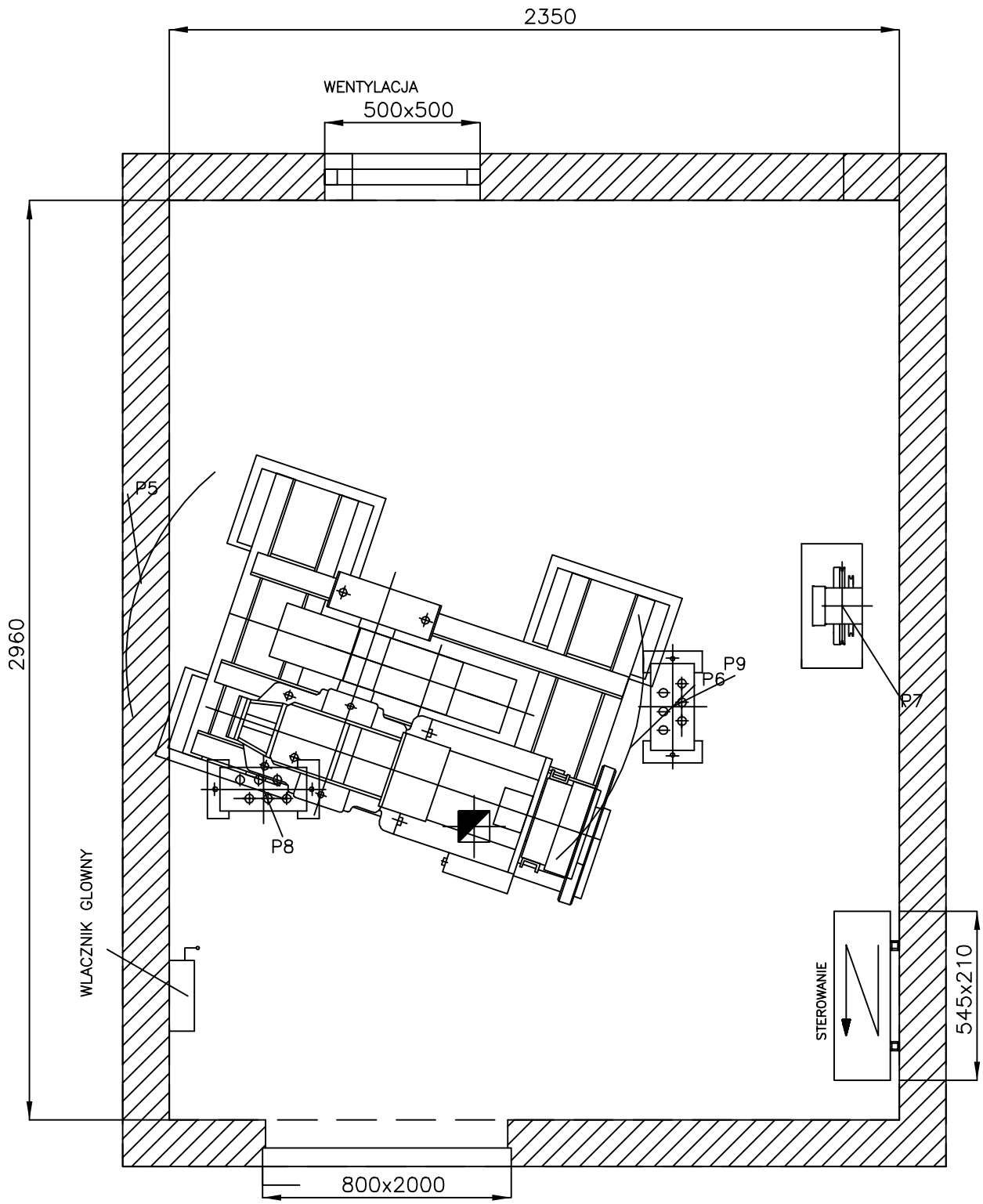
TechWind Jan Rutkowski
tel. (058) 684 86 19/20
fax. (058) 684 86 17

STRONA

1 / 6

mm

JEDNOSTKA



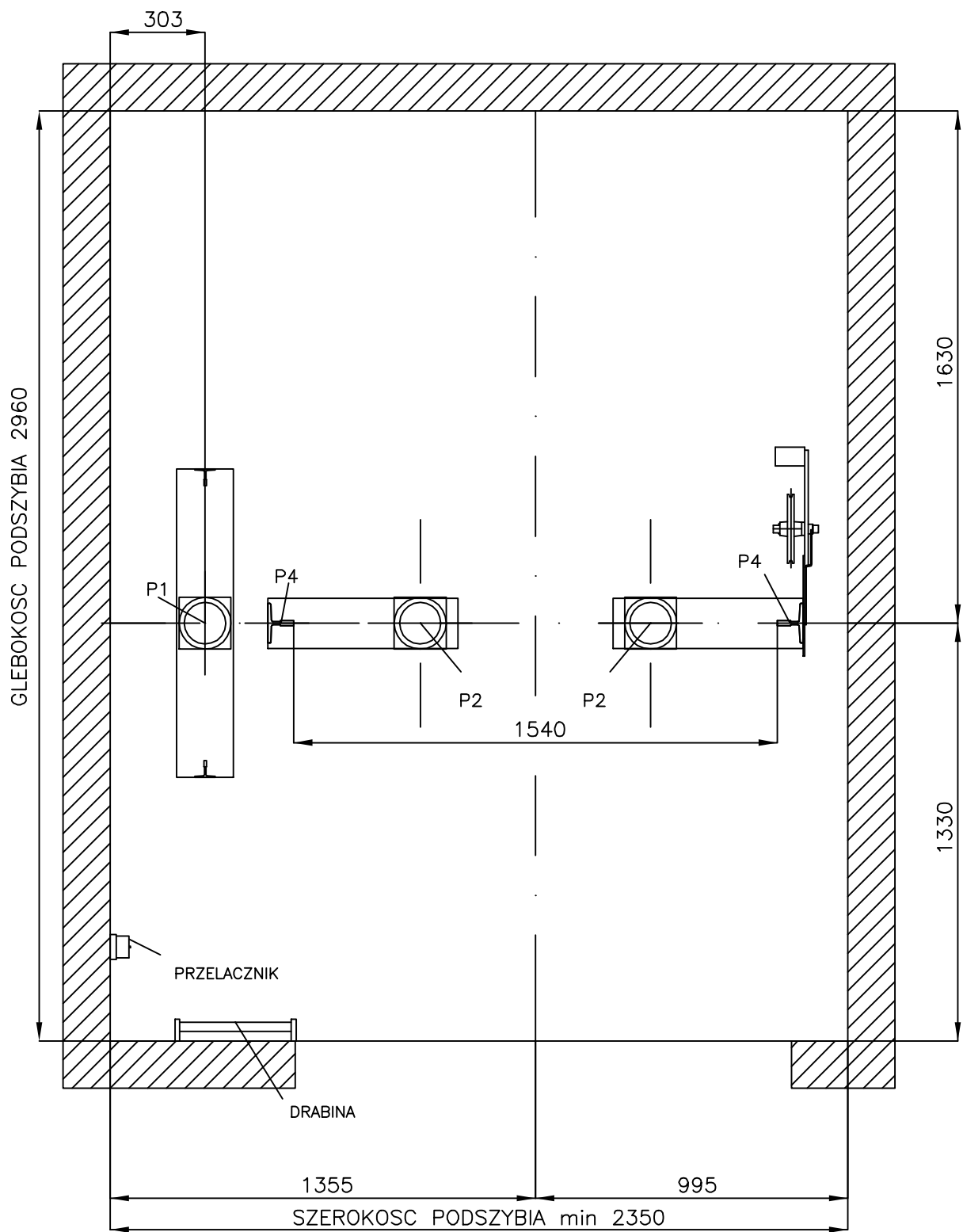
RZUT MASZYNOWNI
Scale 1/20

TechWind Jan Rutkowski
tel. (058) 684 86 19/20
fax. (058) 684 86 17

www: <http://www.techwind.eu>
e-mail: techwind@gdansk.home.pl



| | | | |
|------------|------------|-----------|------------|
| NARYSOWANE | 27/07/2008 | SKALA | RYSUNEK NR |
| SPRAWDZONE | | JEDNOSTKA | STRONA |
| | | mm | 2 / 6 |

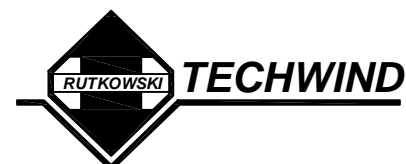


RZUT PODSZYBIA

Scale 1/20

TechWind Jan Rutkowski
 tel. (058) 684 86 19/20
 fax. (058) 684 86 17

www: <http://www.techwind.eu>
 e-mail: techwind@gdansk.home.pl



NARYSOWANE 27/07/2008

SKALA

RYSUNEK NR

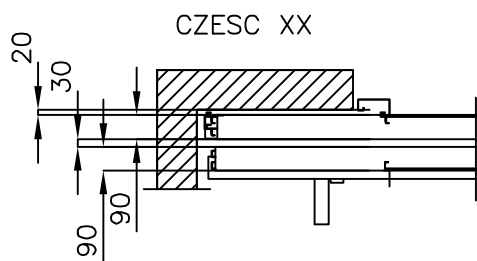
SPRAWDZONE

JEDNOSTKA

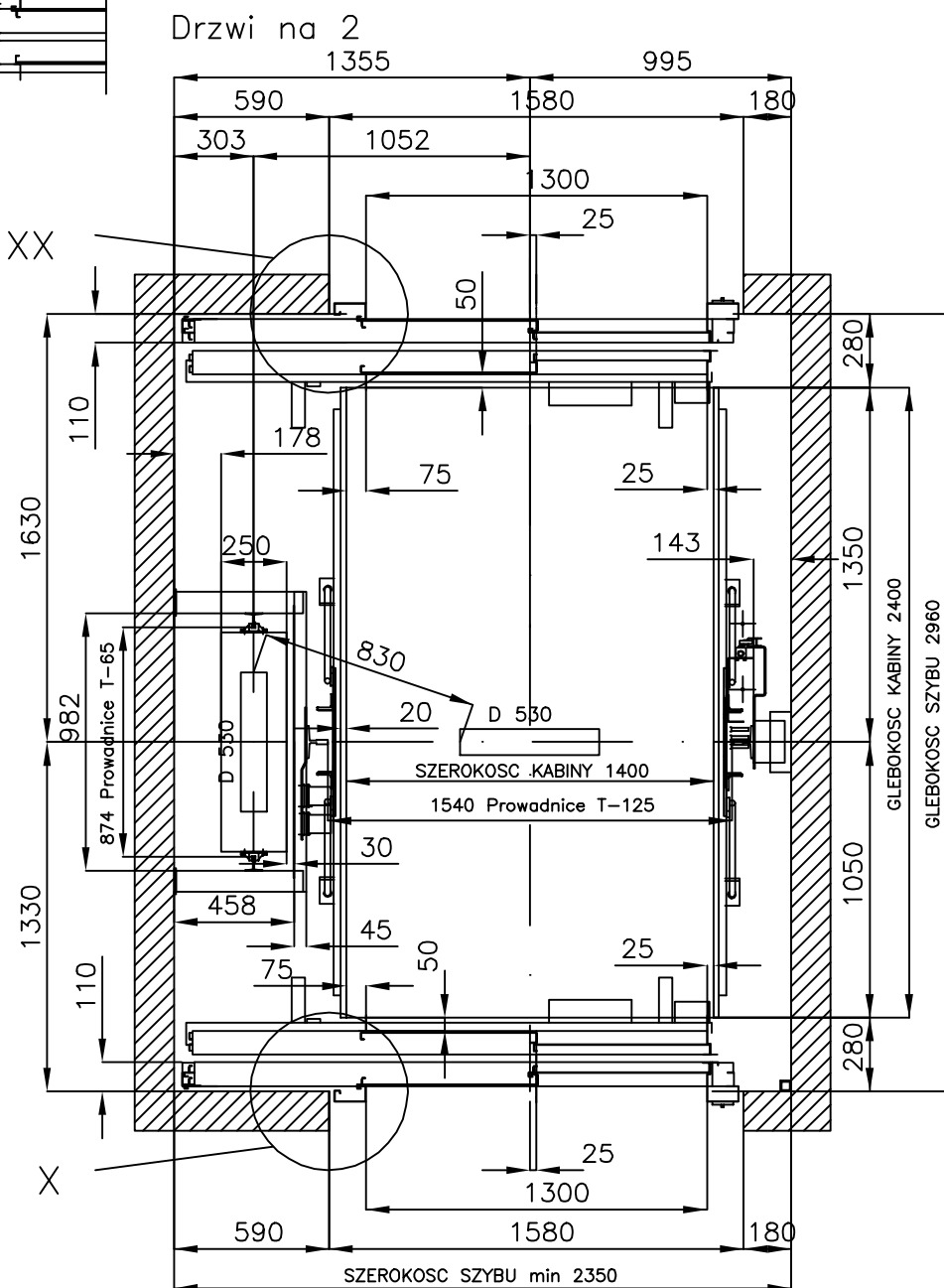
mm

STRONA

3 / 6

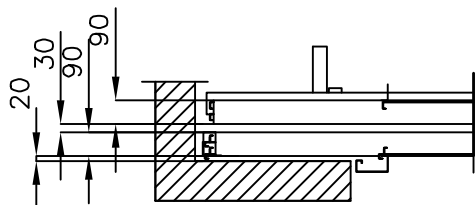


CZESC XX



Drzwi na 0,1

RZUT SZYBU
Skala 1/20



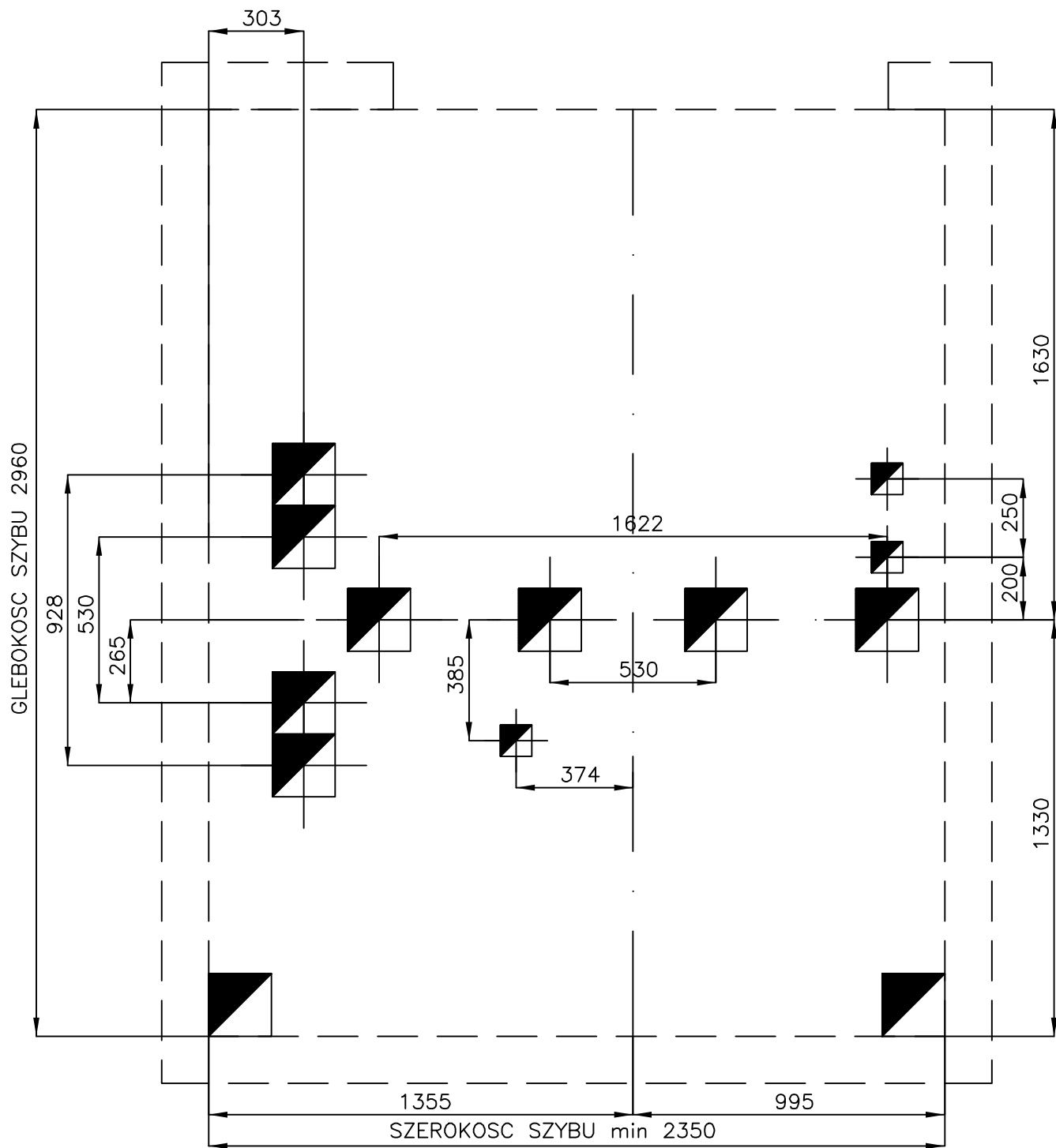
CZESC X

TechWind Jan Rutkowski
tel. (058) 684 86 19/20
fax. (058) 684 86 17

www: <http://www.techwind.eu>
e-mail: techwind@gdansk.home.pl



| | | | | |
|------------|------------|-----------|----|------------|
| NARYSOWANE | 27/07/2008 | SKALA | | RYSUNEK NR |
| SPRAWDZONE | | JEDNOSTKA | mm | STRONA |
| | | | | 4 / 6 |



PLYTA MASZYNOWNI
Skala 1/20

TechWind Jan Rutkowski
tel. (058) 684 86 19/20
fax. (058) 684 86 17

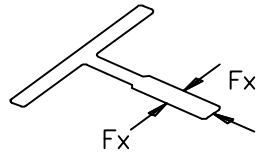
www: <http://www.techwind.eu>
e-mail: techwind@gdansk.home.pl



| | | | | |
|--|------------|------------|-----------|------------|
| | NARYSOWANE | 27/07/2008 | SKALA | RYSUNEK NR |
| | SPRAWDZONE | | JEDNOSTKA | STRONA |
| | | | mm | 5 / 6 |

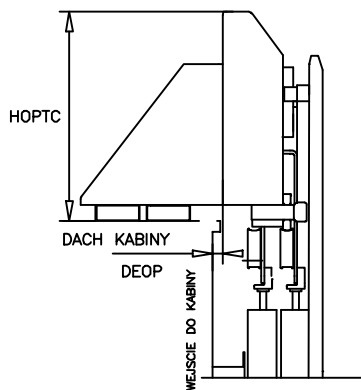
| GLOWNE PARAMETRY | |
|----------------------------------------|---------|
| Udzwig nominalny: | 1600 kg |
| | 21 osob |
| Predkosc: | 1.0 m/s |
| Wysokosc podnoszenia: | ? m |
| Ilosc przystankow: | ? |
| Ilosc dojsc: | ? |
| Napiecie elektryczne: 380 V | |
| Nr fazy: | |
| Czestotliwosc: | 50 Hz |
| Moc oswietleniowa: | 220 V |
| Moc: | 18.5 kW |
| | 25 HP |
| Napiecie nominalne: | 40.1 A |
| Napiecie startowe: | 140 A |
| Max waga kabiny+ramy: 1480 kg | |
| Typ sterowania: Grupowe lub Pojedyncze | |

| UDZWIG W KG | | | |
|-------------|----------|------|----------|
| P1: | 9150 daN | P6: | 2950 daN |
| P2: | 6200 daN | P7: | 200 daN |
| P3: | daN | P8: | 1750 daN |
| P4: | 3350 daN | P9: | 2350 daN |
| P5: | 2350 daN | P10: | daN |



| OBCIAZENIE NA PROWADNICACH | | | | | |
|------------------------------------------------------------------------------------|----------------------------------------------------------------------------------------------------|-----|---------|-----|---------|
|  | <table> <tr> <td>Fx:</td> <td>242 daN</td> </tr> <tr> <td>Fy:</td> <td>144 daN</td> </tr> </table> | Fx: | 242 daN | Fy: | 144 daN |
| Fx: | 242 daN | | | | |
| Fy: | 144 daN | | | | |

| UWAGI |
|---------------------------------------------------------------------------------------------------|
| Wszystkie warunki zawarte w dokumencie 'Praca i dostawa platne przez klienta' musza byc spelnione |

UMIEJSCOWIENIE NAPEDU DRZWI



| | |
|-----------------|-----|
| 1° WEJSCIE (mm) | |
| HOPTC1: | 252 |
| DEOP1: | 20 |
| 2° WEJSCIE (mm) | |
| HOPTC2: | 252 |
| DEOP2: | 20 |

| OTWORY W PLYCIE | |
|--------------------------------------------------------------------------------------|----------|
|  | ∅ 200 mm |
|  | ∅ 100 mm |

| | | | |
|--------|-------------|------|--------|
| - | - | - | - |
| EDYCJA | MODYFIKACJA | DATA | PODPIS |

TechWind Jan Rutkowski
tel. (058) 684 86 19/20
fax. (058) 684 86 17

www: <http://www.techwind.eu>
e-mail: techwind@gdansk.home.pl



| | | | |
|------------|----------|-----------|------------|
| NARYSOWANE | 24/07/08 | SKALA | RYSUNEK NR |
| SPRAWDZONE | | JEDNOSTKA | mm |
| | | STRONA | 6 / 6 |